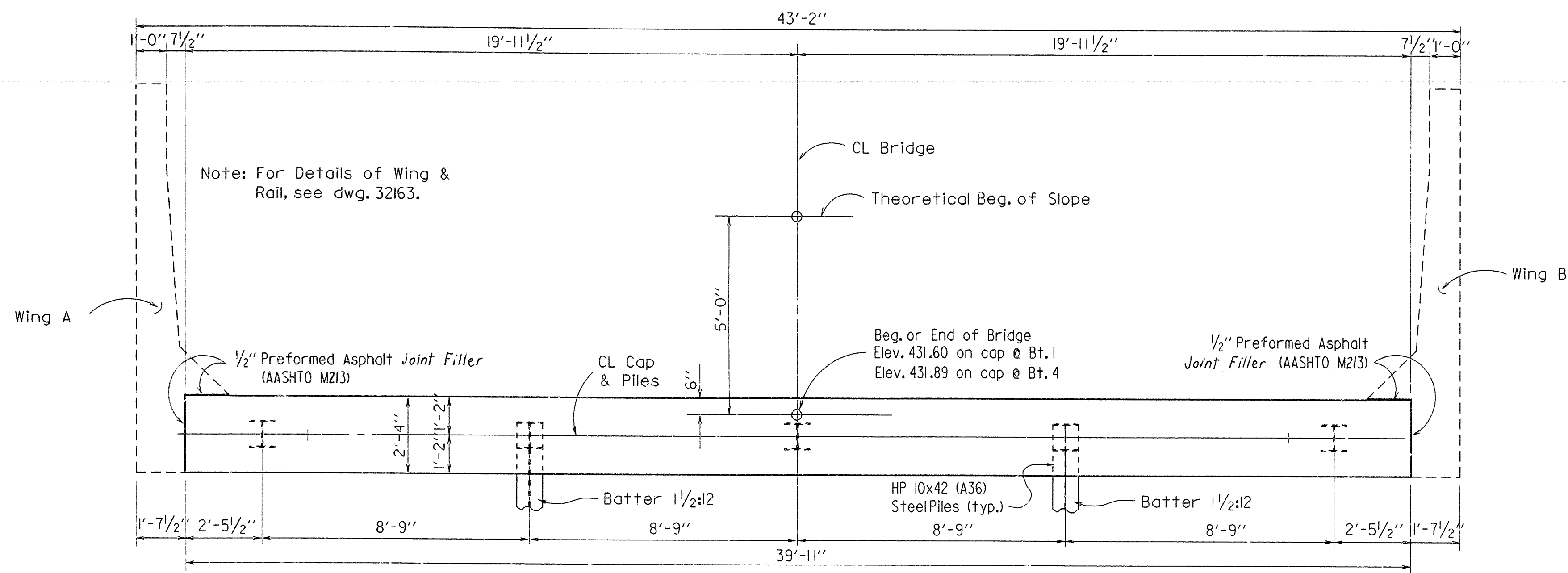
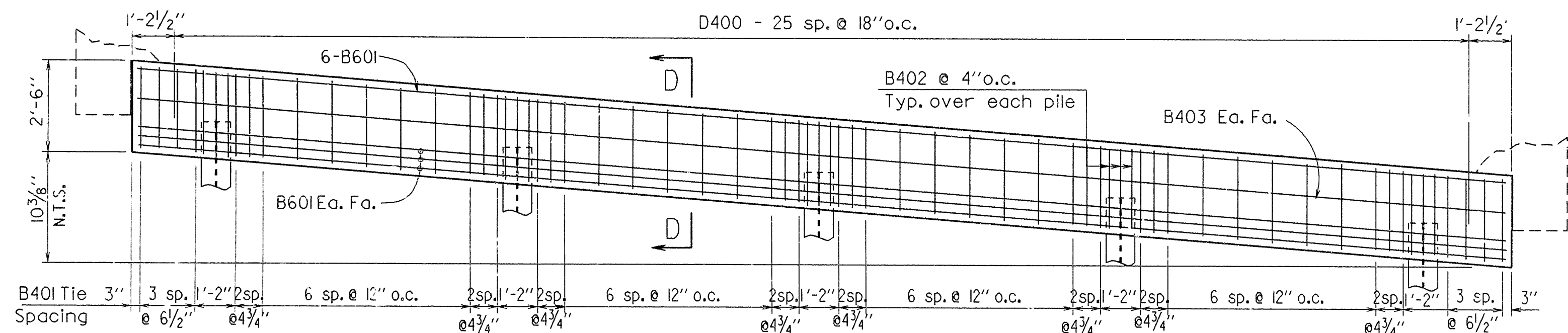


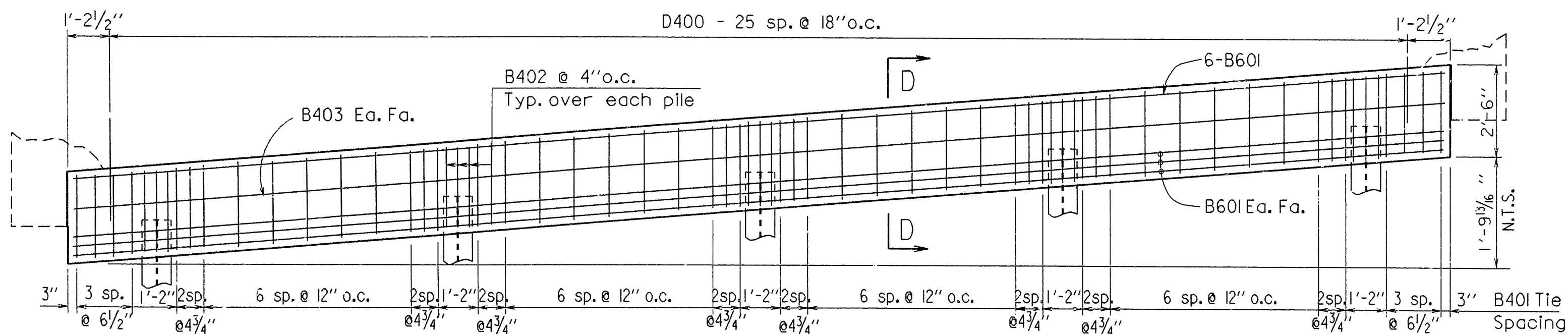
DATE REVISED	DATE FILMED	DATE REVISED	DATE FILMED	FED. ROAD DIST. NO.	STATE	FED. AID PROJ. NO.	SHEET NO.	TOTAL SHEETS
				6	ARK.			
				JOB NO.		R30014	70	248
				6419 - END BENTS - 32159				



PLAN - BENTS 1 & 4
3/8" = 1'-0"



ELEVATION - BENT NO. 1
Looking Back
3/8" = 1'-0"

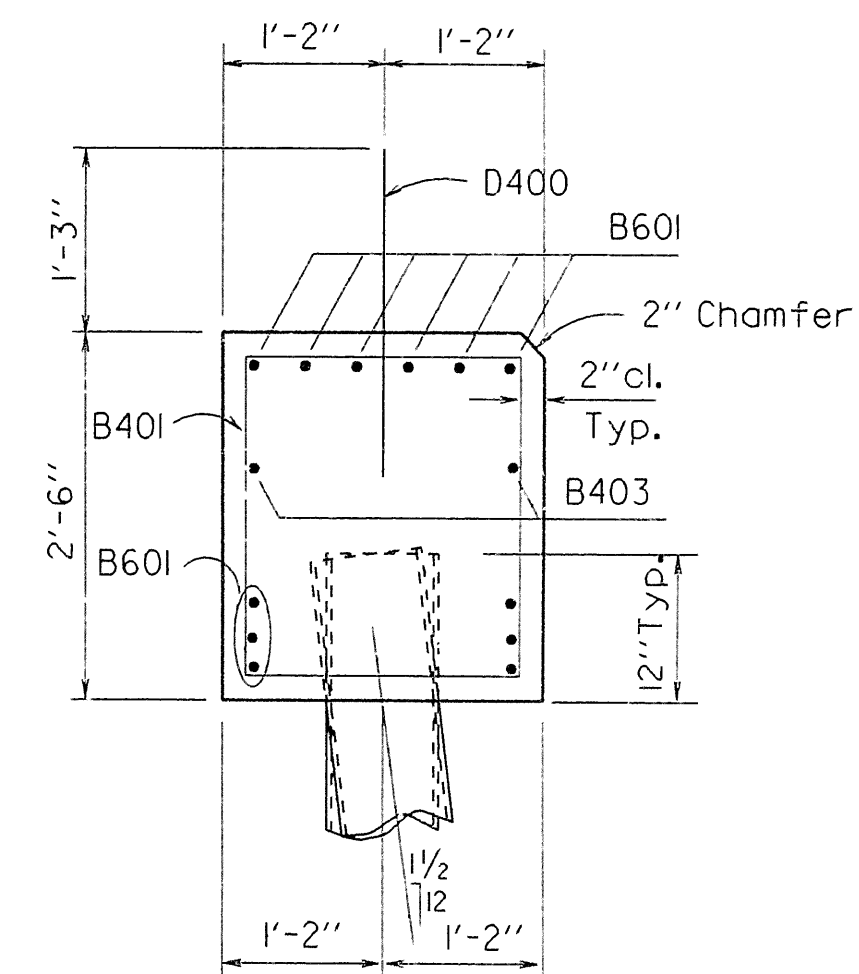


ELEVATION - BENT NO. 4
Looking Forward
3/8" = 1'-0"

BAR LIST-PER BENT

Mark	No. Req'd.	Length	A	B	Pin Dia.	Bending Diagrams
B401	52	8'-8"	2'-0"	2'-2"	2"	
B402	15	6'-2"	2'-0"	2'-2"	2"	
B403	2	39'-7"			Str.	
D400	26	2'-6"			Str.	
B601	12	39'-7"			Str.	

Dimensions are out to out of bars.



SECTION D-D
3/4" = 1'-0"

GENERAL NOTES

ALL CONCRETE SHALL BE CLASS "S" WITH A MINIMUM 28 DAY COMPRESSIVE STRENGTH, $f'_c = 3500$ PSI AND SHALL BE POURED IN THE DRY. ALL EXPOSED CORNERS TO BE CHAMFERED $\frac{3}{4}$ INCHES UNLESS OTHERWISE NOTED.

REINFORCING STEEL SHALL CONFORM TO ASTM A615 OR A617, GRADE 60 (YIELD STRENGTH = 60,000 PSI).

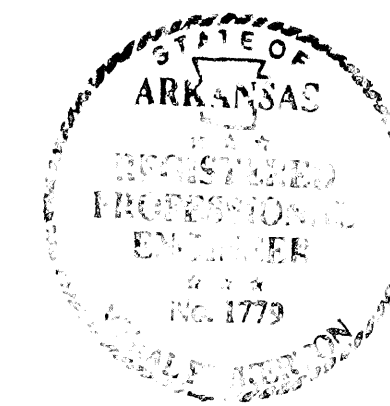
ALL PILING SHALL BE DRIVEN TO A MINIMUM BEARING CAPACITY OF 55 TONS PER PILE. PILING SHALL BE HP 10x42 STEEL PILING (A36).

PREFORMED ASPHALT JOINT FILLER SHALL BE MEASURED AND PAID FOR AS CLASS S(AE) CONCRETE.

LIVE LOAD: HS20

METHOD OF DESIGN: LOAD FACTOR

SEE LAYOUT FOR ADDITIONAL NOTES.



DETAILS OF BENT NOS. 1 & 4 NORTH FORK OZAN CREEK

ROUTE SEC.
ARKANSAS STATE HIGHWAY COMMISSION

LITTLE ROCK, ARK.

DRAWN BY: KDH DATE: 3 JUL 91

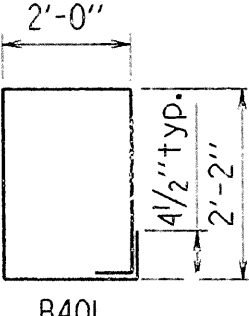
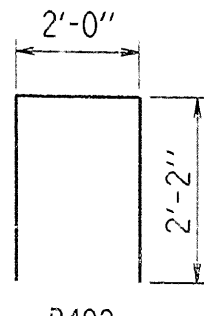
CHECKED BY: M.C.C. DATE: 8-13-91 SCALE: AS NOTED

DESIGNED BY: C.F. DATE: 7-2-91

BRIDGE NO. 6419 DRAWING NO. 32159

DATE REVISED	DATE FILMED	DATE REVISED	DATE FILMED	FED. ROAD DIST. NO.	STATE	FED. AID PROJ. NO.	SHEET NO.	TOTAL SHEETS
				6	ARK.			
				JOB NO.		R30014	71	248
						6419 - INT. BENTS - 32160		

BAR LIST-PER BENT

MARK	NO. REQ'D.	LENGTH	P.D.	BENDING DIAGRAMS
B401	50	8'-8"	2"	Dimensions are out to out of bars. 
B402	15	6'-2"	2"	
B403	4	22'-2"	Str.	
B601	12	42'-8"	Str.	
D400	*	2'-6"	Str.	

* 28 req'd. for Bent 2, 0 req'd. for Bent 3.

GENERAL NOTES

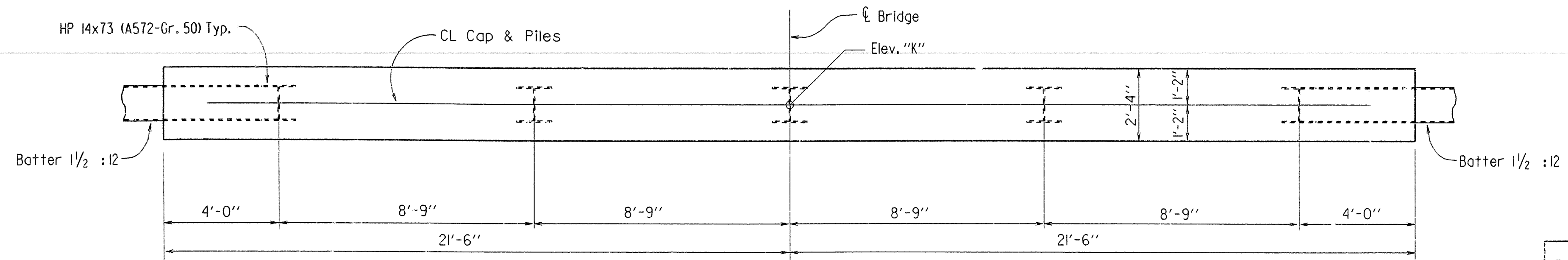
All concrete in bent cap shall be Class "S" with a minimum 28 day compressive strength $f'_c = 3,500$ psi. Concrete shall be poured in the dry unless otherwise noted. All exposed corners to be chamfered $3/4"$ unless otherwise noted. Seal concrete, if used in pile encasement, shall have a minimum 28 day compressive strength $f'_c = 2,100$ psi.

All reinforcing steel shall conform to ASTM A615 or A617, Grade 60 (yield strength = 60,000 psi.).

For additional information see layout.

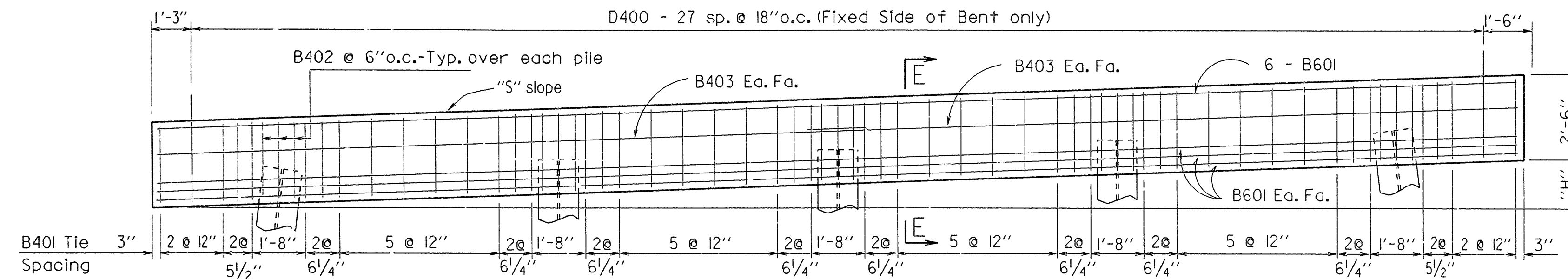
TABLE OF VARIABLES

Bent No.	"S"	"H"	Elev. "K"
2	0.0296'	1'-3 $\frac{3}{4}"$	431.70
3	0.0376'	1'-7 $\frac{3}{8}"$	431.79



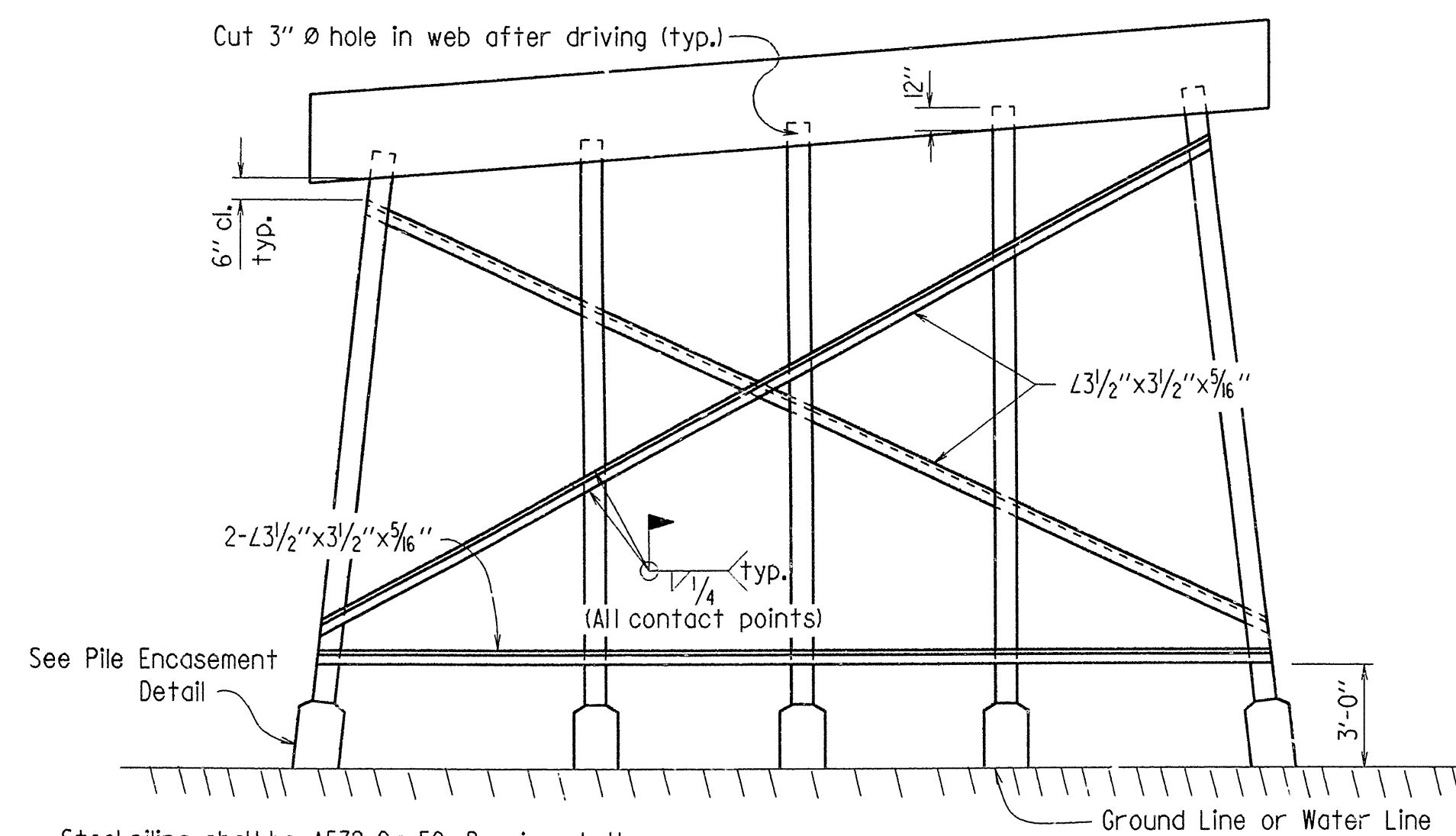
PLAN-INT. BENTS 2 & 3

$3/8" = 1'-0"$



ELEVATION-INT. BENTS 2 & 3

Looking Ahead
 $3/8" = 1'-0"$

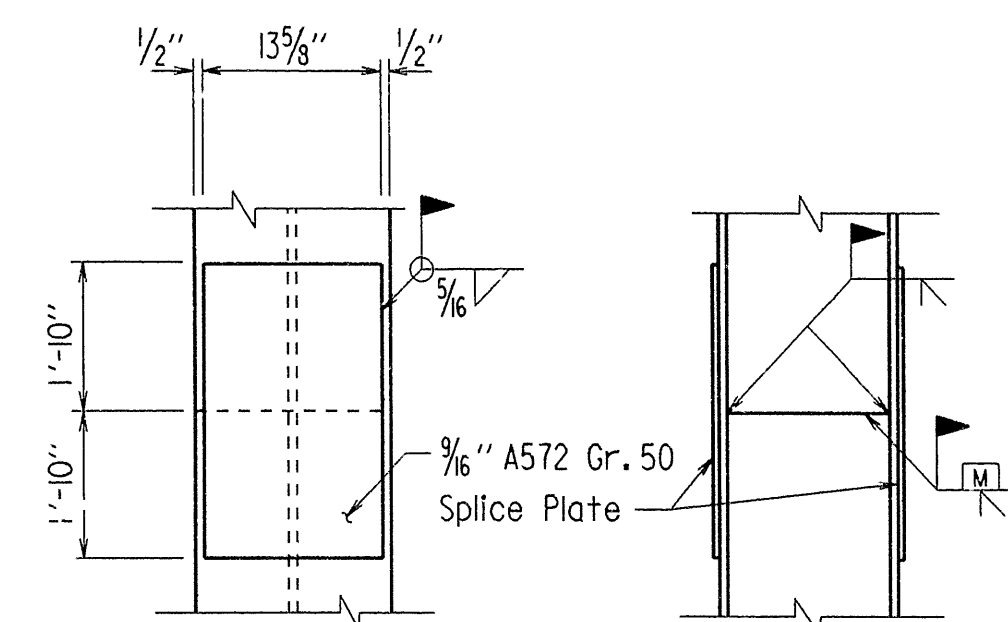


Steel piling shall be A572 Gr. 50. Bracing shall be A36. Bracing & piling shall be protected by three coats of paint as specified for painting structural steel in Section 638 of the Standard Specifications.

Note:
All bracing shall be cut and welded in the field. Each brace shall be furnished in one piece. Payment shall be made under the item "Structural Steel in Bents (A36)".

TYPICAL BRACING FOR INT. STEEL PILE BENTS

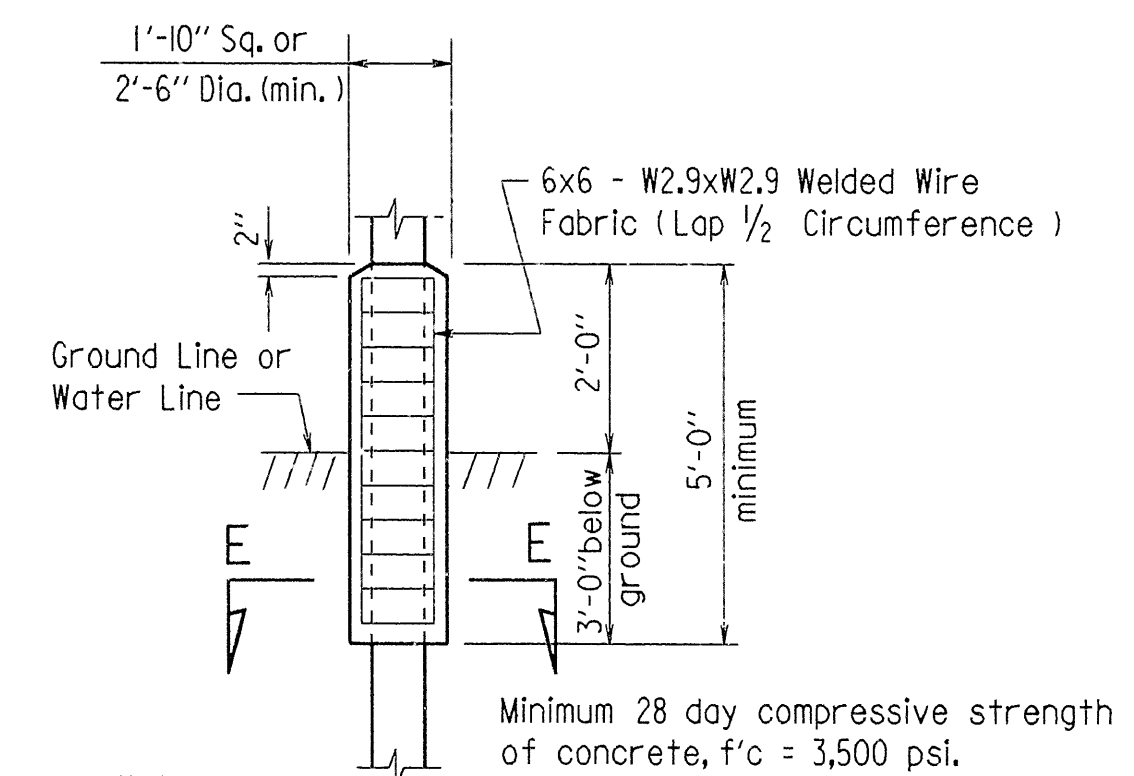
No Scale



Note:
The contractor may for his own convenience and at his own expense provide as many as three splices per pile for steel bearing piling. Minimum spacing between splices shall be 5 ft.

PILE SPLICE DETAIL

No Scale

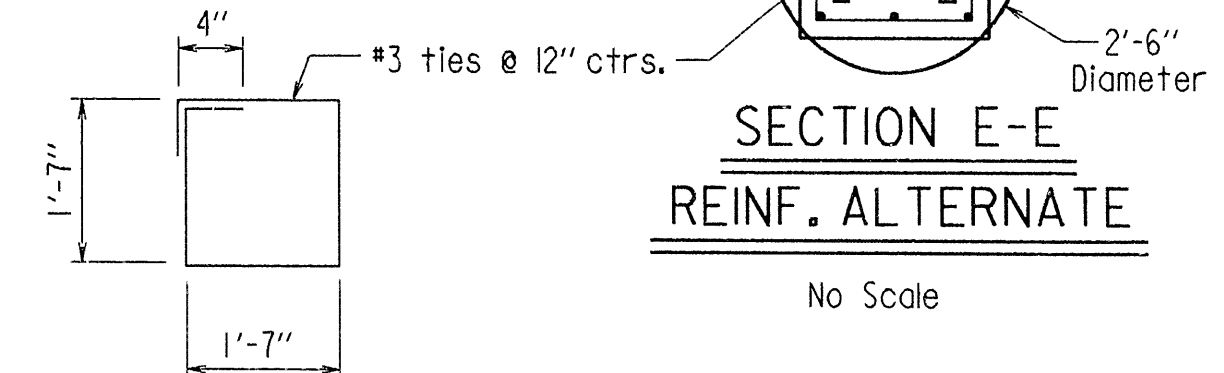


Note:
If concrete cannot be placed in the dry, seal concrete may be deposited under water. Concrete & welded wire fabric or reinforcing in encasements shall be paid for at the contract unit price per linear foot bid for "Pile Encasements."

PILE ENCASEMENT DETAIL

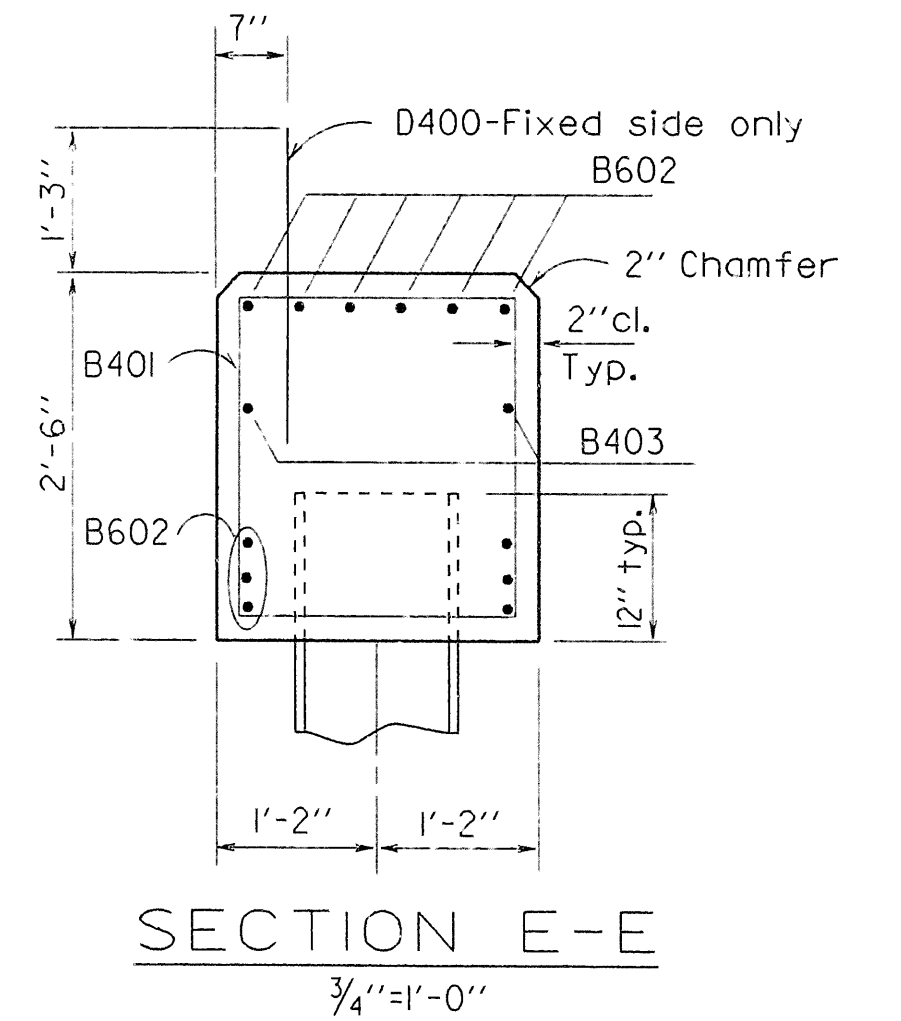
No Scale

Reinforcing Alternate
#3 Vertical - 8 per encasement
#3 ties @ 12" ctrs.
Yield Strength, $f_y = 60,000$ psi.



SECTION E-E
REINF. ALTERNATE

No Scale



SECTION E-E

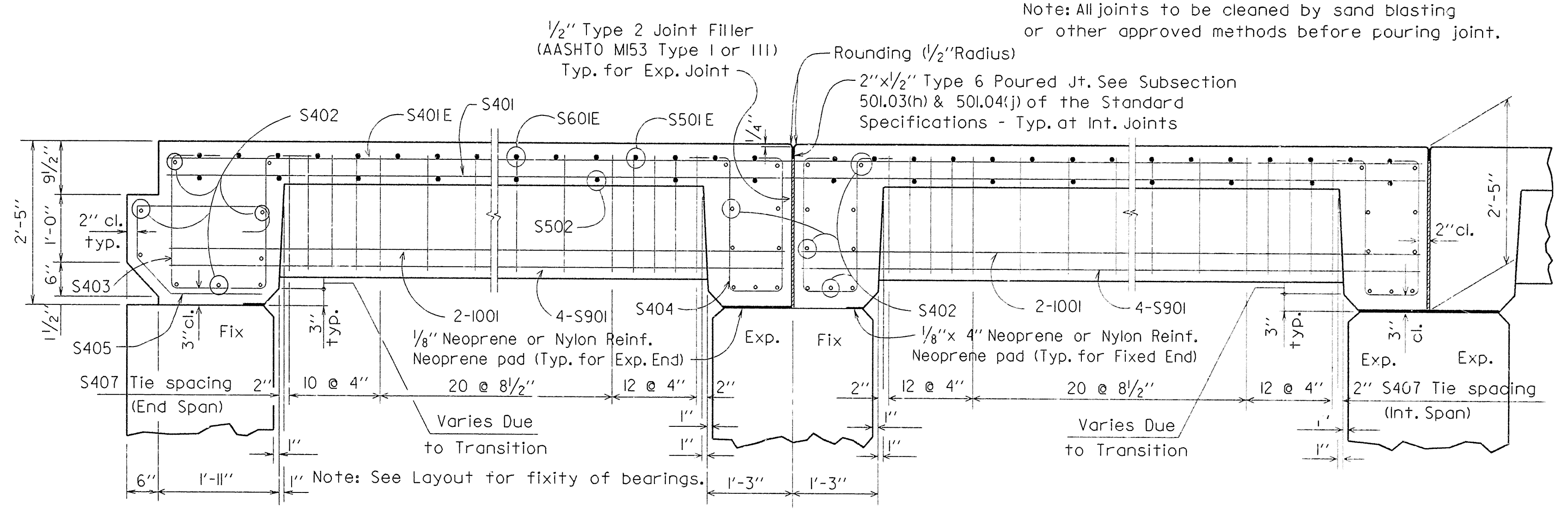
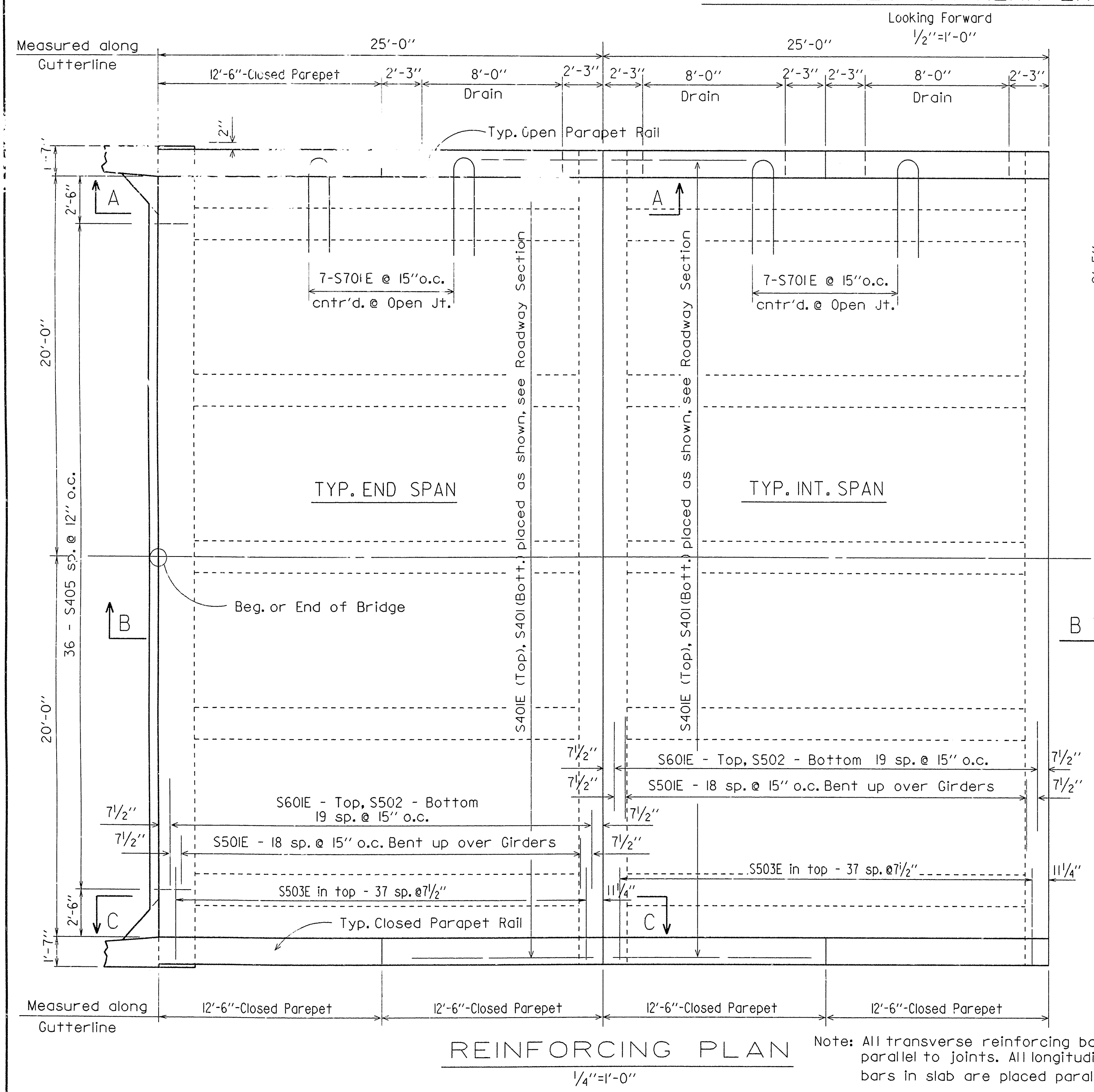
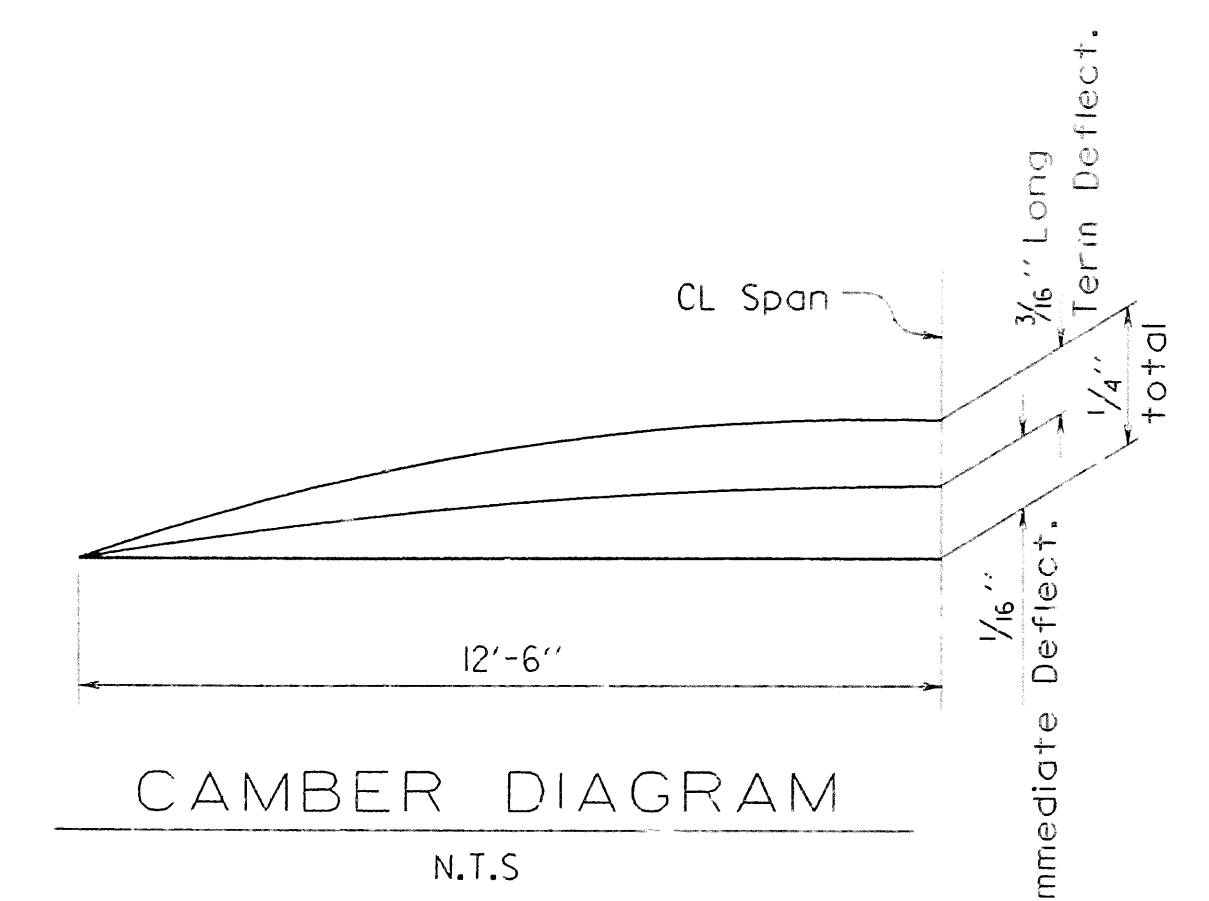
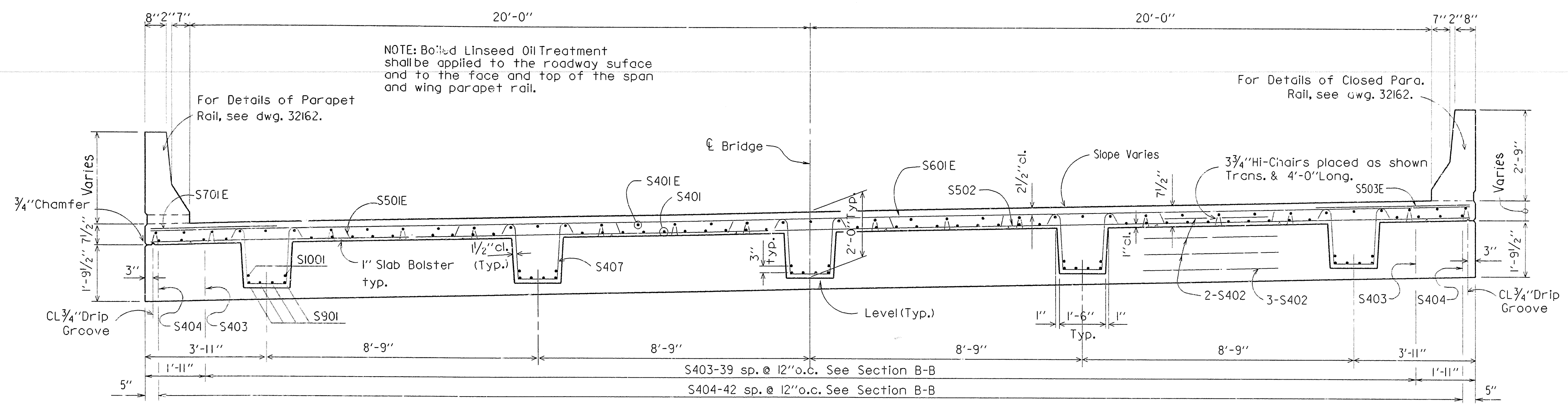
$3/4" = 1'-0"$

DETAILS OF BENT NOS. 2 & 3 NORTH FORK OZAN CREEK

ROUTE SEC.
ARKANSAS STATE HIGHWAY COMMISSION
LITTLE ROCK, ARK.

DRAWN BY: KDH DATE: 8 JUL 91
CHECKED BY: MEC DATE: 8-13-91
DESIGNED BY: C.J.F. DATE: 7-3-91
BRIDGE NO. 6419 DRAWING NO. 32160

DATE REVISED	DATE FILMED	DATE REVISED	DATE FILMED	FED. ROAD DIST. NO.	STATE	FED. AID PROJ. NO.	SHEET NO.	TOTAL SHEETS
				6	ARK.			
				JOB NO.		R30014	72	248
						6419 - R.C.D.G. SPANS - 32161		



GENERAL NOTES

ALL CONCRETE SHALL BE CLASS (S)AEI. ALL EXPOSED CORNERS TO BE CHAMFERED 3/4\"/>

THE CONCRETE IN THE GIRDERS, END DIAPHRAGMS, AND DECK SHALL BE PLACED IN ONE CONTINUOUS POUR FOR INTERIOR SPANS. THE CONCRETE IN THE GIRDERS, DECK, END DIAPHRAGMS, AND WINGS SHALL BE PLACED IN ONE CONTINUOUS POUR FOR END SPANS.

REINFORCING STEEL TO BE ASTM A615 OR A617, GRADE 60.

BAR SUPPORTS FOR REINFORCING BARS WILL NOT BE PAID FOR DIRECTLY, BUT WILL BE CONSIDERED SUBSIDIARY TO THE ITEM 'REINFORCING STEEL.'

NEOPRENE PAD, TYPE 2 JOINT FILLER, TYPE 6 POURED JOINT, AND STRUCTURAL STEEL SHALL BE MEASURED AND PAID FOR AS CLASS (S)AEI CONCRETE. NEOPRENE MATERIAL SHALL MEET THE REQUIREMENTS OF SECTION 808.02 OF THE STANDARD SPECIFICATIONS AND SHALL BE IN ONE PIECE FOR THE FULL WIDTH AND LENGTH OF THE BEARING.

SPECIFICATIONS: ARKANSAS STATE HIGHWAY COMMISSION STANDARD SPECIFICATIONS FOR HIGHWAY CONSTRUCTION, 1991 EDITION AND APPLICABLE SPECIAL PROVISIONS AND SUPPLEMENTAL SPECIFICATIONS.

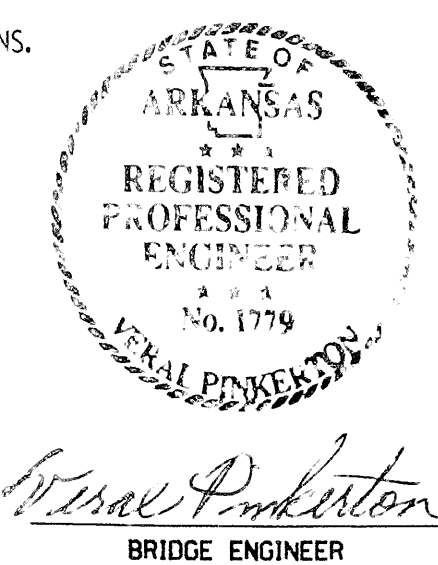
DESIGN SPECIFICATIONS: AASHTO 1989 EDITION AND CURRENT INTERIMS.

DESIGN LIVE LOADING: HS20 METHOD OF DESIGN: LOAD FACTOR

DEAD LOAD: 1522 PLF (INCLUDES 219 PLF FUTURE WEARING SURFACE).

LIVE LOAD: 1458 WHEELS + IMPACT

MATERIAL STRENGTHS: 28 DAY COMPRESSIVE STRENGTH OF CLASS (S)AEI CONCRETE = 3500 PSI. YIELD STRENGTH OF REINFORCING STEEL = 60,000 PSI.



SHEET 1 OF 2

DETAILS OF 25'-0\"/>

ROUTE SEC.

ARKANSAS STATE HIGHWAY COMMISSION

LITTLE ROCK, ARK.

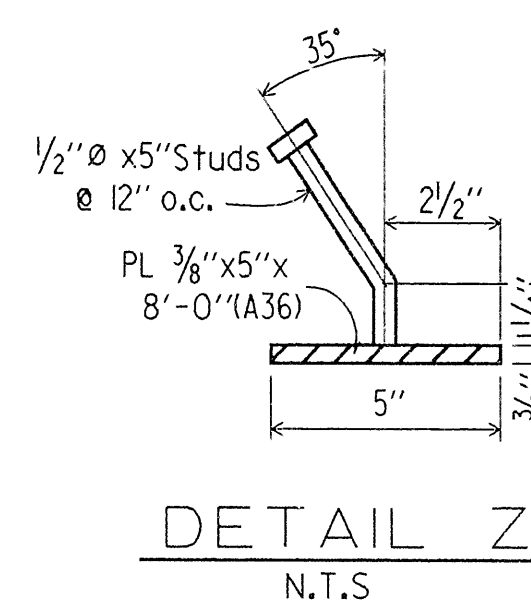
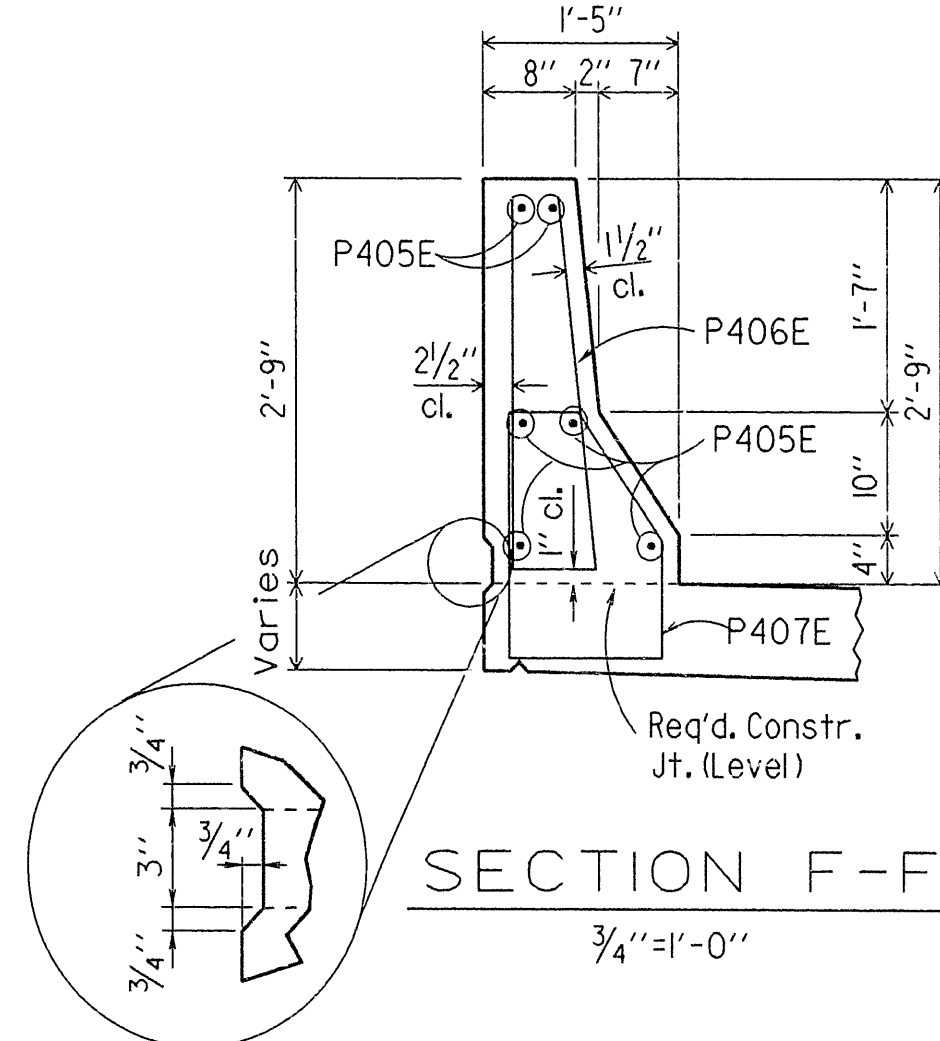
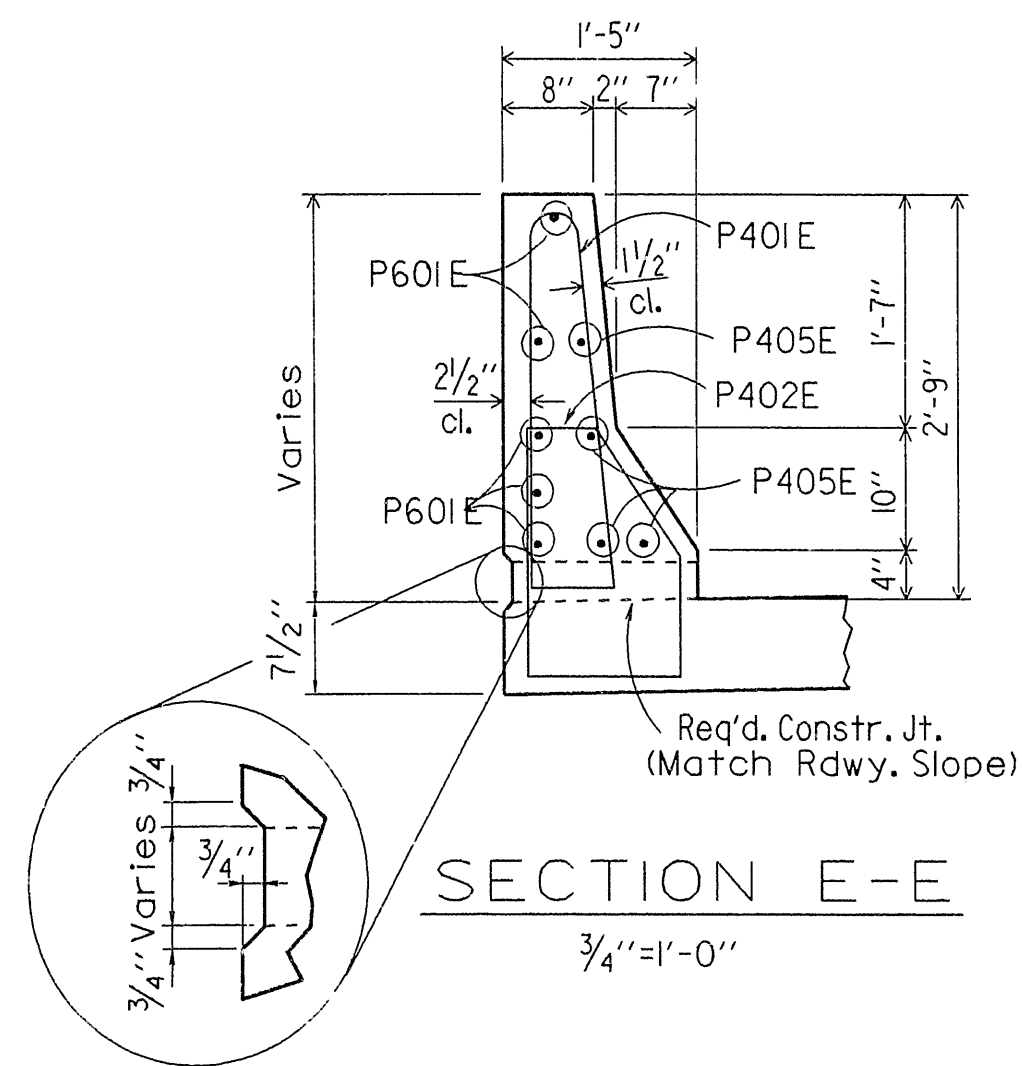
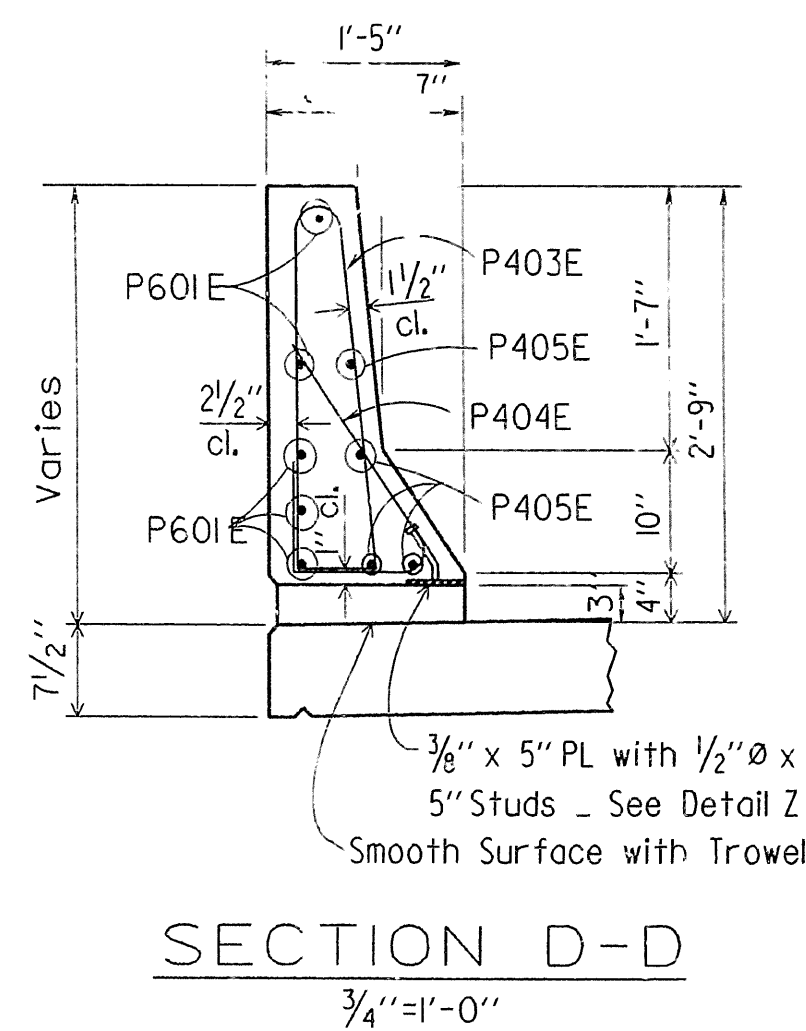
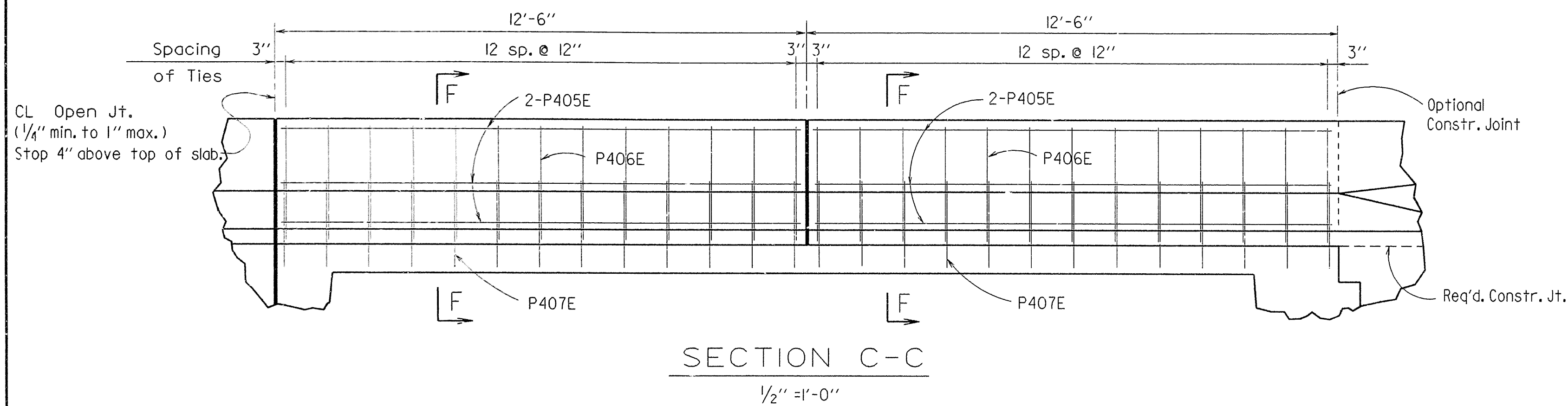
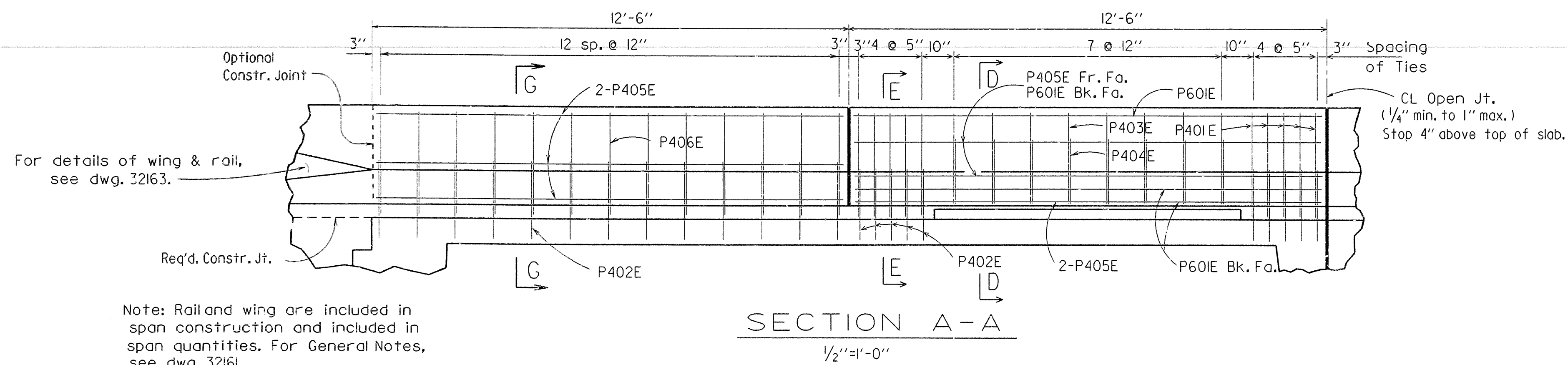
DRAWN BY: KDH DATE: 2 JUL 91

CHECKED BY: MEC DATE: 8-16-91 SCALE: AS NOTED

DESIGNED BY: CJE DATE: 7-2-91

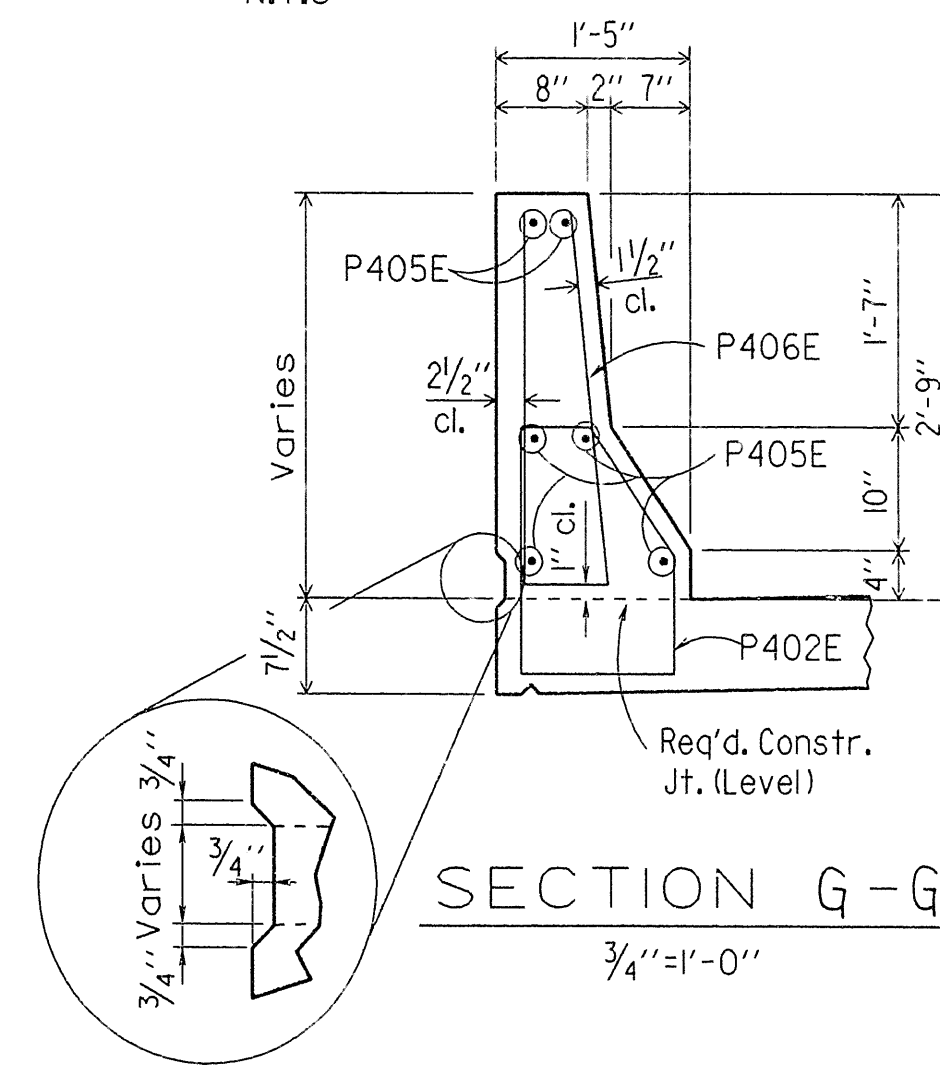
BRIDGE NO. 6419 DRAWING NO. 32161

DATE REVISED	DATE FILMED	DATE REVISED	DATE FILMED	FED. ROAD DIST. NO.	STATE	FED. AID PROJ. NO.	SHEET NO.	TOTAL SHEETS
				6	ARK.			
				JOB NO.		R30014	73	248
						6419 - R.C.D.G. SPANS - 32162		



Note:
Parapet Studs shall be 5" long, granular flux filled, solid fluxed, or equal, and automatically end welded to the plate. Studs and plate shall meet the requirements of Section 807. Studs and plate shall be measured and paid for as Class S(AE) Concrete.

The surfaces of the 3/8" Plates which will not be in contact with concrete shall receive two coats of paint in the shop. These coats shall be those specified as Shop Prime Coat Finish Coat in Subsection 638 of the Standard Specifications.



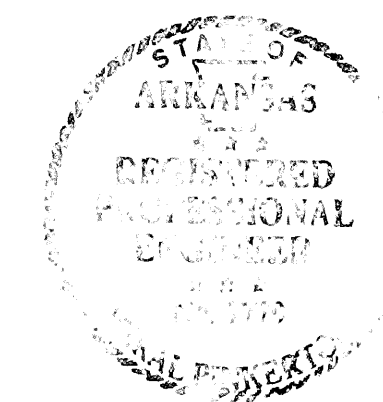
BAR LIST-PER SPAN

MARK	No. Req'd.	Length	Pin Dia.	Bending Diagrams
End	Int.			
S100I	10	10	24'-8"	Str.
S90I	20	20	24'-8"	Str.
S60IE	20	20	42'-6"	Str.
S50IE	19	19	43'-2"	3"
S502	20	20	42'-6"	Str.
S503E	38	38	6'-0"	Str.
S401E	41	41	24'-8"	Str.
S401	48	48	24'-8"	Str.
S402	36	36	22'-1"	Str.
S403	40	40	5'-7"	2"
S404	43	86	4'-11"	2"
S405	36	36	5'-6"	2"
S407	215	225	5'-3"	2"
P401E	10	20	6'-4"	2"
P402E	23	20	5'-6"	2"
P403E	8	16	5'-10"	2"
P404E	8	16	3'-2"	2"
P405E	22	20	12'-1"	Str.
P406E	39	26	5'-6"	2"
P407E	26	26	5'-5"	2"
S70IE	7	7	12'-4"	7"
P601E	5	10	12'-1"	Str.

Dimensions are out to out of bars.

① 1/2" Overtolerance; no undertolerance

② At the Contractor's option, two straight #5 bars may be substituted for bar S50IE. Payment for reinforcing will be based on weight of bar S50IE.



SHEET 2 OF 2
DETAILS OF 25'-0" R.C.D.G. SPANS
NORTH FORK OZAN CREEK
ROUTE SEC.
ARKANSAS STATE HIGHWAY COMMISSION
LITTLE ROCK, ARK.
DRAWN BY: KDH DATE: 2 JUL 91
CHECKED BY: MCG DATE: 8-16-91
DESIGNED BY: CJE DATE: 7-2-91
BRIDGE NO. 6419 DRAWING NO. 32162

DATE REVISED	DATE FILMED	DATE REVISED	DATE FILMED	FED. ROAD DIST. NO.	STATE	FED. AID PROJ. NO.	SHEET NO.	TOTAL SHEETS
				6	ARK.			
				JOB NO.		R30014	74	248
6419 - STD. WING - 32163								

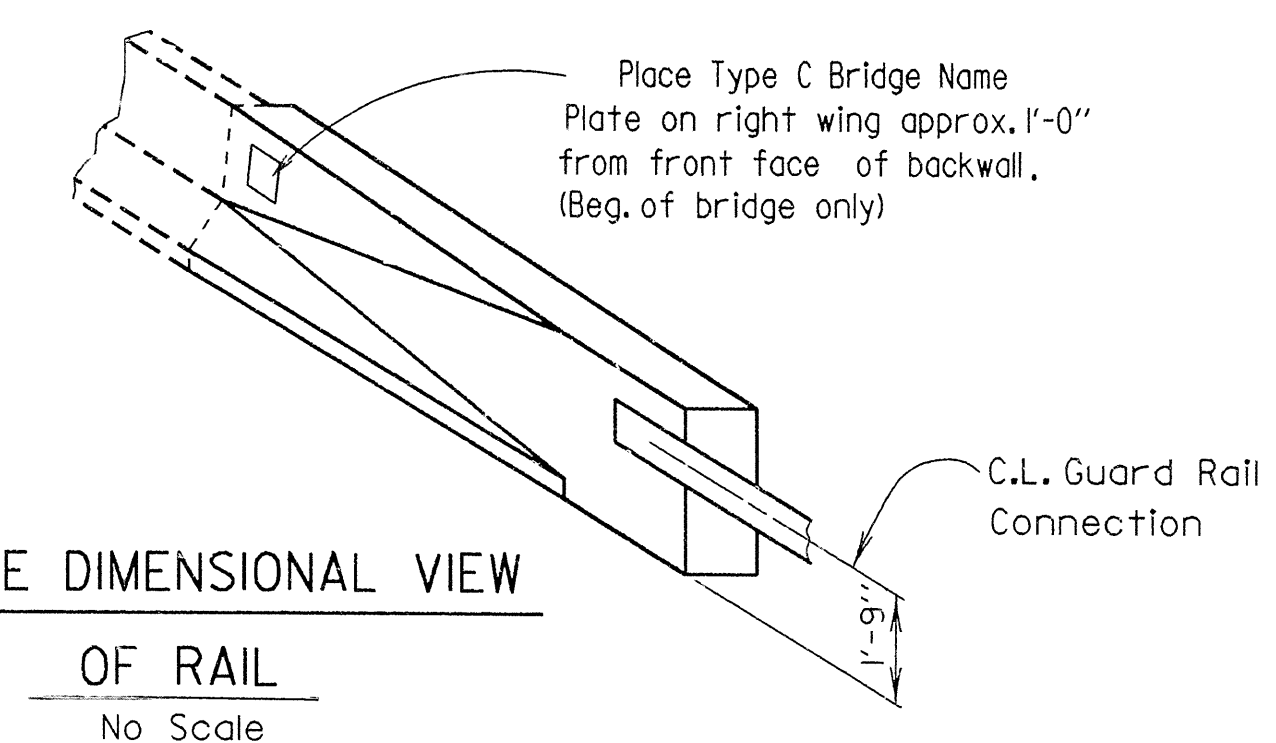
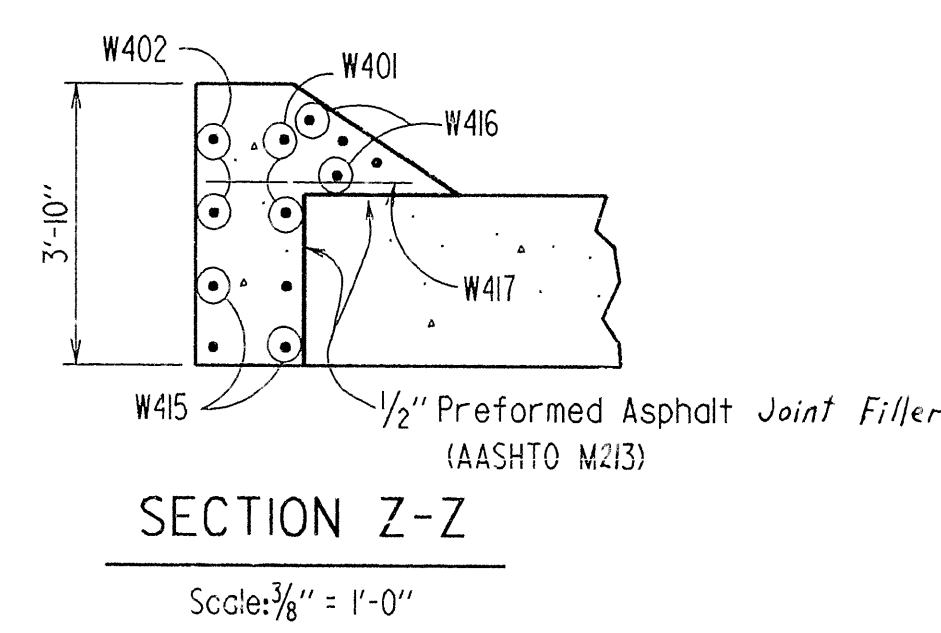
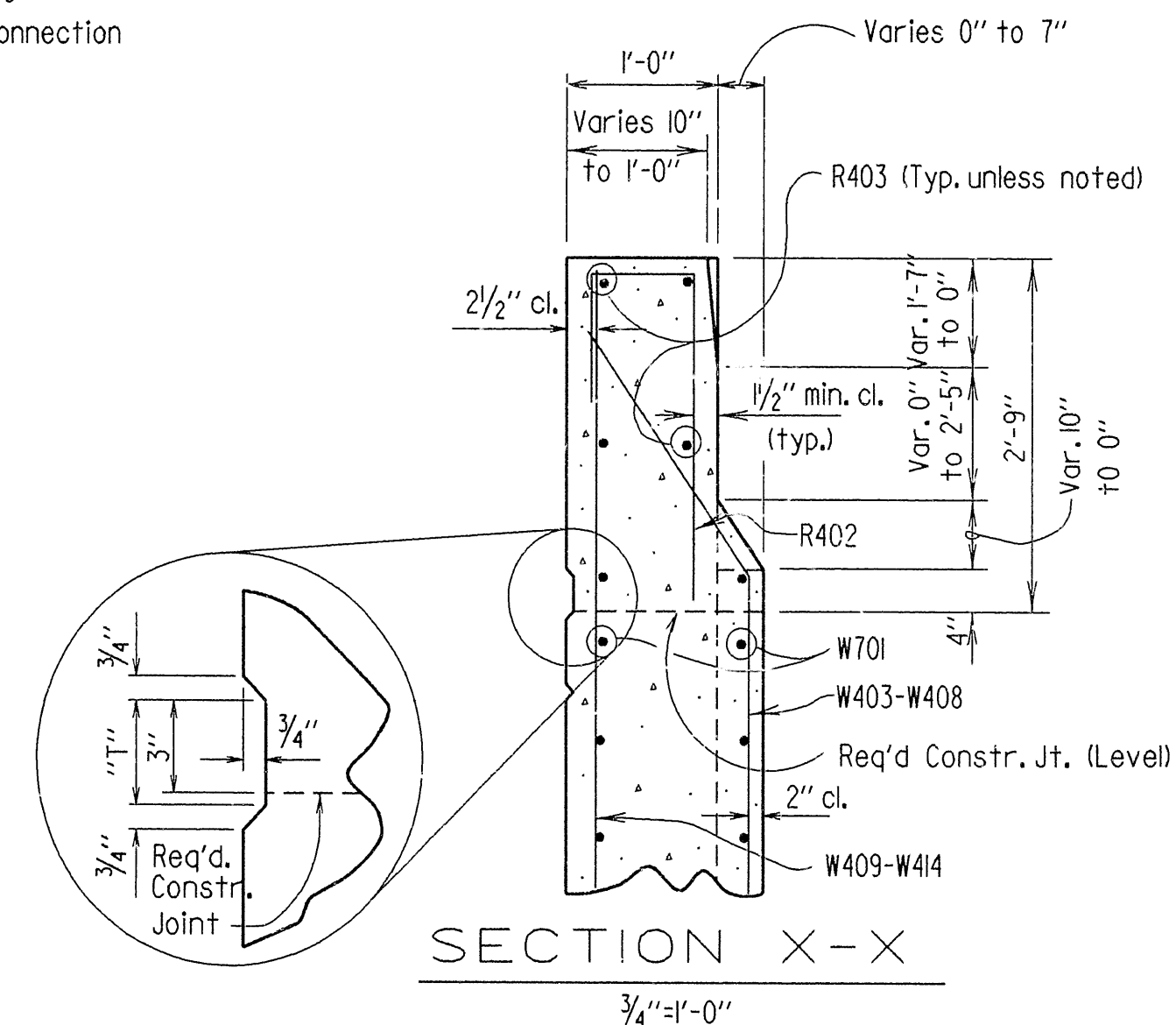
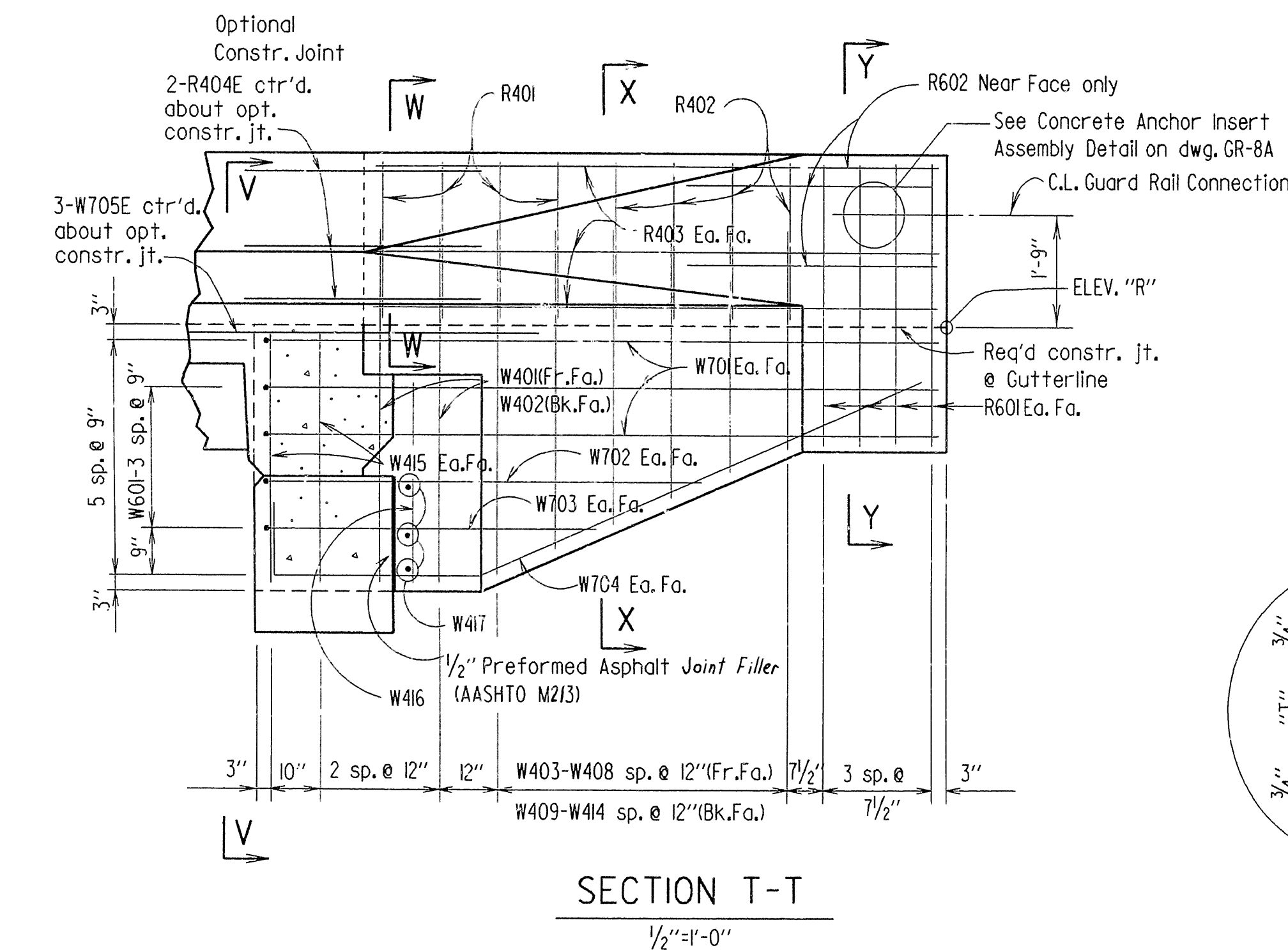
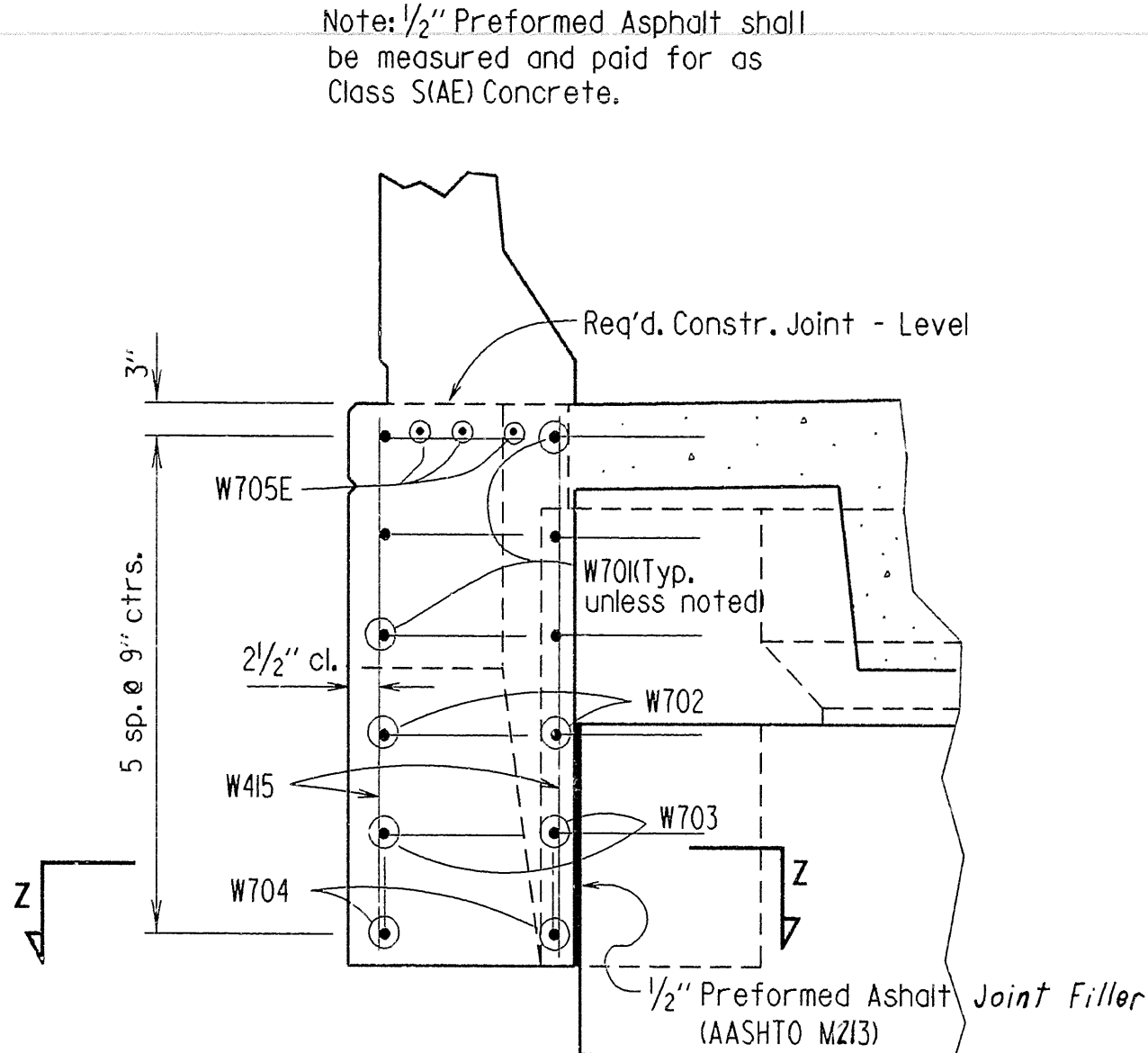
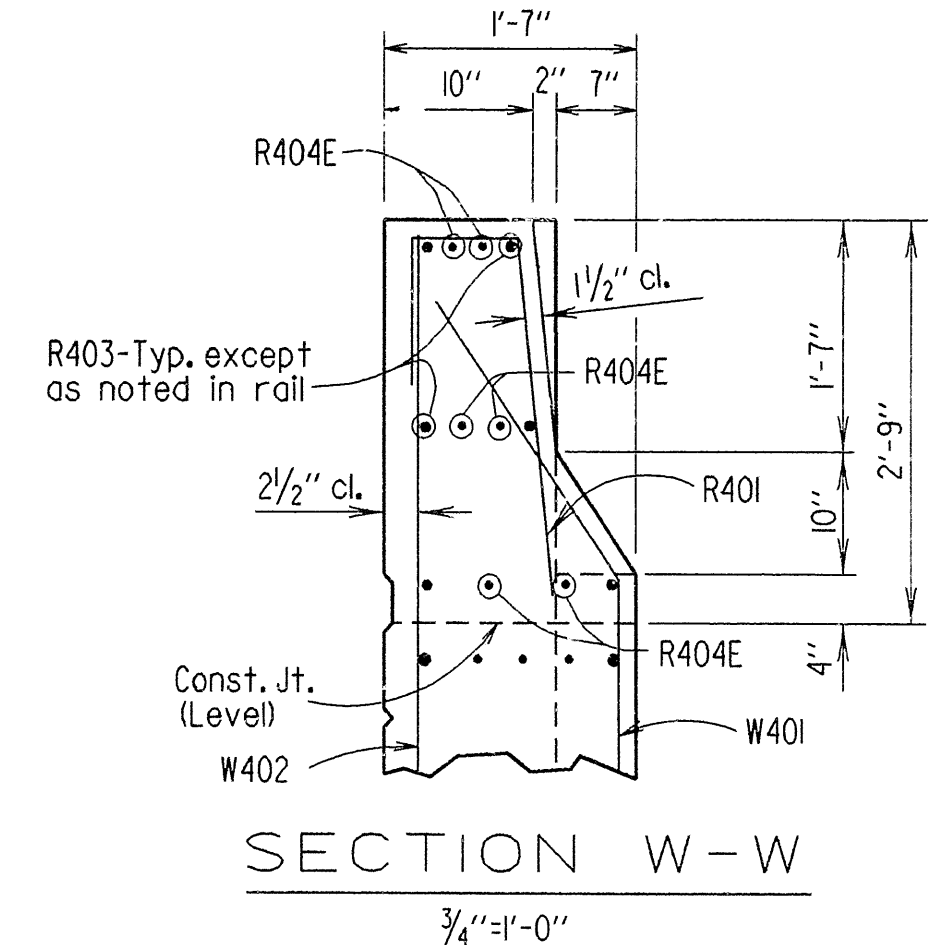
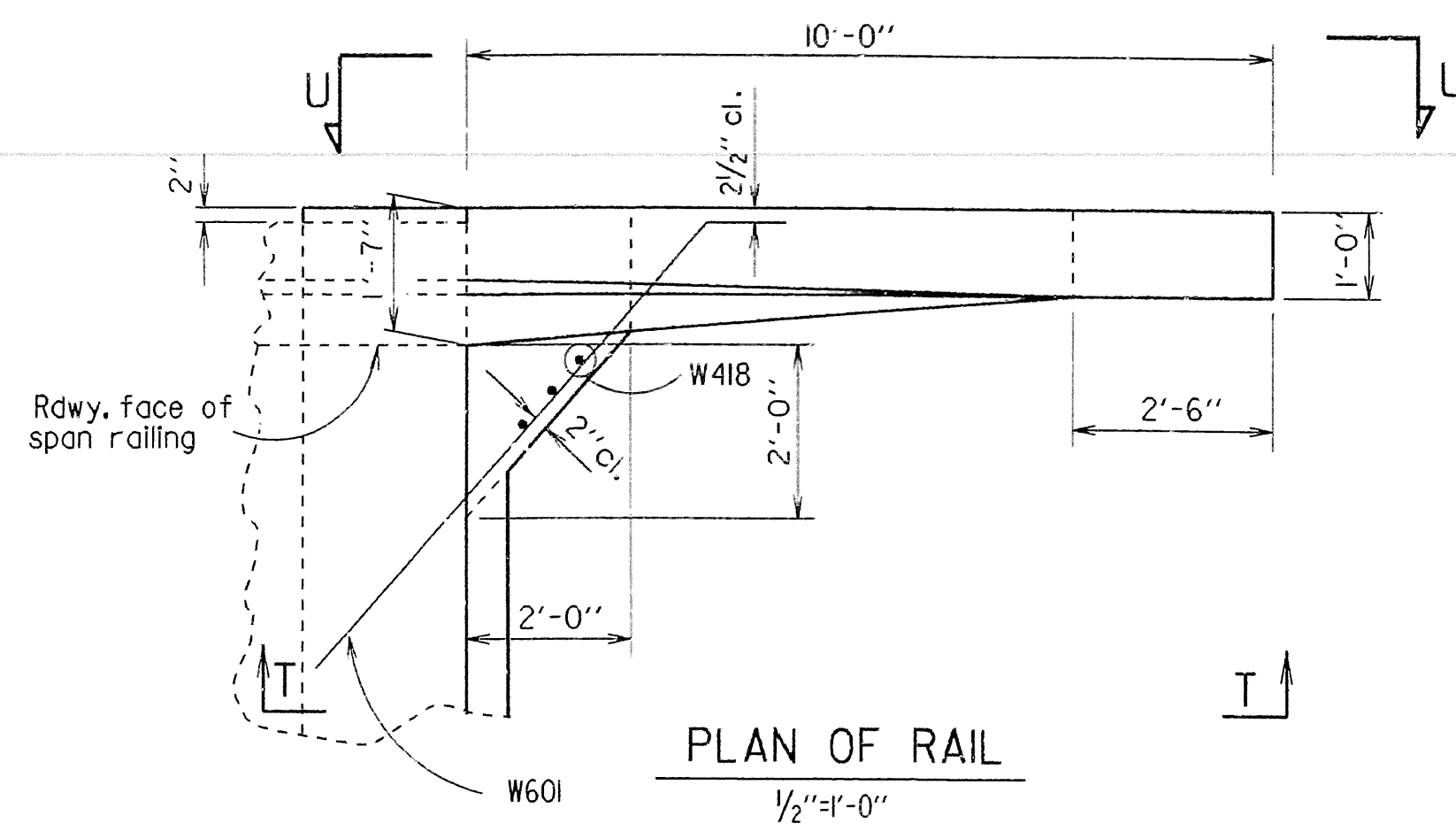
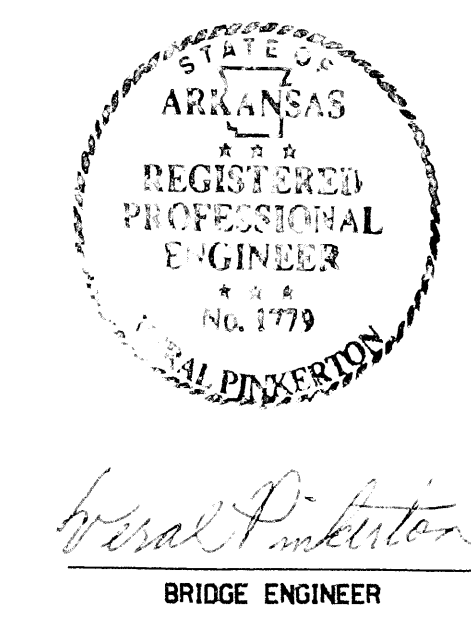


TABLE OF VARIABLES

		Elev. "R"	Elev. "S"	"K"	"T"	"H"
Bent No. 1	Wing A	434.21	434.45	4 1/8"	3"	4'-6 1/8"
	Wing B	433.60	433.59	8 1/8"	3 3/8"	4'-2 3/4"
Bent No. 4	Wing A	433.37	433.40	7 5/8"	3 3/4"	4'-3 3/8"
	Wing B	435.32	435.22	9 3/8"	3"	4'-1 3/8"

Tabular Data By: KDH Date: 2 JUL 91
 Checked By: MEC Date: 8-13-91



STANDARD DETAILS
 FOR WING AND RAIL
 NORTH FORK OZAN CREEK
 ROUTE SEC.
 ARKANSAS STATE HIGHWAY COMMISSION
 LITTLE ROCK, ARK.
 ALTERED BY: LM DATE: 11-4-87
 CHECKED BY: MCC DATE: 8-13-91 SCALE: As Shown
 DESIGNED BY: DATE:
 BRIDGE NO. 6419 DRAWING NO. 32163

BAR LIST (WING & RAIL)

MARK	NO.	REQ'D.	LENGTH	A	B	PIN DIA.
R401	8		3'-11"			2"
R402	8		4'-0"			2"
R403	12		9'-8"			Str.
R404E	12		4'-0"			Str.
R601	16		4'-5"			Str.
R602	6		5'-0"			Str.
W401	4		5'-6"	4'-4"	1'-2"	2"
W402	4		6'-8"			Str.
W403-W408	2 of each		Var. 3'-5" to 5'-5"	Var. 2'-3" to 4'-3"	1'-2"	2"
W409-W414	2 of each		Var. 4'-6" to 6'-7"			Str.
W415	8		3'-11"			Str.
W416	8		3'-2"			Str.
W417	6		2'-7"			Str.
W601	8		7'-5"	6'-7"	1'-0"	4 1/2"
W701	12		12'-6"	11'-6"	1'-2"	5 1/2"
W702	4		8'-6"	7'-6"	1'-2"	5 1/4"
W703	4		6'-8"	5'-8"	1'-2"	5 1/4"
W704	4		12'-8"			5 1/4"
W705E	6		6'-0"			Str.

